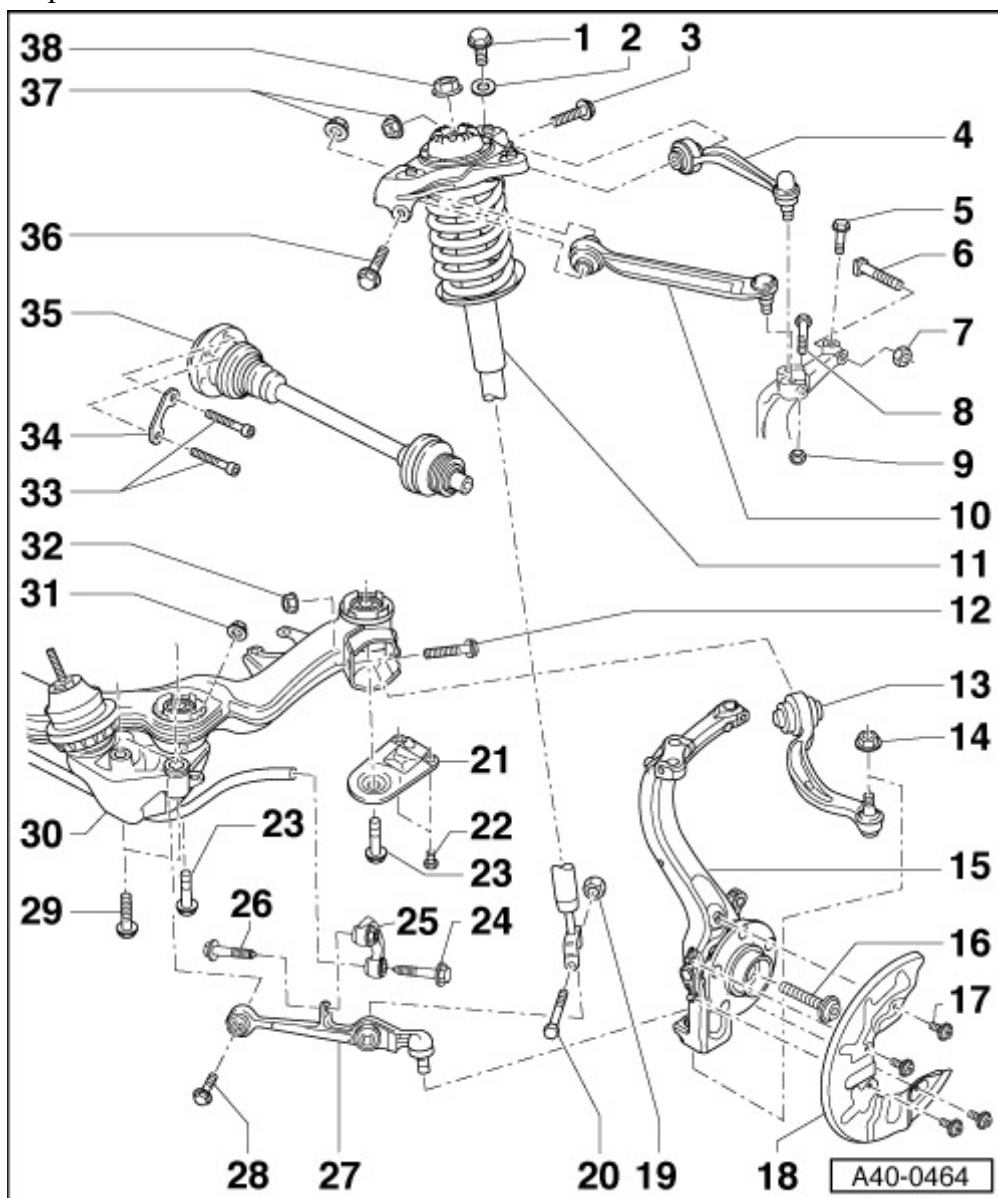


Exploded view



1 - Hexagon bolt

q 75 Nm

2 - Washer

3 - Hexagon bolt

q Always renew if removed

4 - Upper link (rear)

q Removing and installing → [Chapter](#)

q Renewing bush → [Chapter](#)

5 - Hexagon bolt

q 5 Nm

q Always renew if removed

q For adjusting toe constant „S“

6 - Bolt

7 - Self-locking nut

q 45 Nm

q Always renew if removed

8 - Hexagon bolt

q 40 Nm

9 - Self-locking nut

q Always renew if removed

10 - Upper link (front)

q Removing and installing mounting bracket → [Chapter](#)q Renewing bush → [Chapter](#)

11 - Suspension strut

q Note different running gear versions; see vehicle data sticker → [Anchor](#)q Discharging and charging system on vehicles with Dynamic Ride Control (DRC II)
→ [Chapter](#)q Removing and installing → [Chapter](#)q Servicing → [Chapter](#)q Removing and installing mounting bracket → [Chapter](#)

12 - Hexagon bolt

q 70 Nm + 180°

q Always renew if removed

13 - Guide link (bottom)

q Removing and installing guide link → [Chapter](#)Hydro-bush must be renewed if leaking → [Chapter](#)

14 - Nut

q 110 Nm

q Always renew if removed

15 - Wheel bearing housing

q For vehicles with headlight range control, refer to notes on removing and installing sender
→ [Chapter](#)q Removing and installing → [Chapter](#)q Servicing → [Chapter](#)

16 - Flange bolt

q Always renew if removed

q Keep to specified sequence when loosening → [Anchor](#), and tightening → [Anchor](#)q Tightening torque → [Anchor](#)

17 - Flange bolt

q 10 Nm

18 - Splash plate

19 - Self-locking nut

q Always renew if removed

20 - Hexagon bolt

q 90 Nm

21 - Subframe support

q Tunnel cross member can be installed instead of subframe support

q Removing and installing tunnel cross member → [Chapter](#)

22 - Hexagon bolt

q 65 Nm

23 - Hexagon bolt

q 110 Nm + 90°

q Always renew if removed

q Thread in body can be repaired using wire thread insert according to DIN 8140 (Helicoil). The thread insert must be of the same length as the thread in the body.

24 - Hexagon bolt

q 40 Nm + 90°

q Always renew if removed

25 - Coupling rod

26 - Hexagon bolt

q 40 Nm + 90°

q Always renew if removed

27 - Track control link (bottom)

q For vehicles with headlight range control, refer to notes on removing and installing sender → [Chapter](#)q Removing and installing track control link (all engine versions except 3.0 ltr. TDI and 3.2 ltr. FSI) → [Chapter](#)q Removing and installing track control link (vehicles with 3.0 ltr. TDI and 3.2 ltr. FSI engines) → [Chapter](#)

28 - Hexagon bolt

q 70 Nm + 180°

q Always renew if removed

29 - Hexagon bolt

q 75 Nm

q Always renew if removed

q Thread in body can be repaired using wire thread insert according to DIN 8140 (Helicoil). The thread insert must be of the same length as the thread in the body.

30 - Subframe

With different types of subframe mountings: Subframe with bonded rubber bushes in subframe/body mountings (all vehicles except Cabriolet). Bonded rubber bushes can be renewed. Alternatively subframe with welded steel bushes instead of bonded rubber bushes in subframe/body mountings (Cabriolet models only). Steel bushes are not replaceable; subframe must be renewed if bushes are damaged. For correct version refer to → [Parts catalogue](#)

q At the start of production, a subframe with short diagonal struts was installed on Cabriolet models (each of these struts is secured between a point on the outer rear part of the subframe and the underbody). The subframe was then gradually changed over to a version with long

diagonal struts in production (these struts are secured between points on the front and centre parts of the subframe and the underbody). The earlier version of the subframe is no longer available as a replacement part, so if the subframe has to be renewed it will be necessary to use the later version for long diagonal struts → [Chapter](#). For the correct version of parts, refer to → [Electronic parts catalogue](#).

q For vehicles with headlight range control, refer to notes on removing and installing sender → [Chapter](#)

q Removing and installing → [Chapter](#)

q Renewing bonded rubber bushes in subframe → [Chapter](#)

q Removing and installing tunnel cross member → [Chapter](#)

31 - Self-locking nut

q Always renew if removed

32 - Self-locking nut

q Always renew if removed

33 - Multi-point socket head bolt

q First pre-tighten all bolts to 15 Nm, then tighten all bolts to final specified torque

q Tightening torques:

M 8 bolt: 40 Nm

M 10 bolt: 70 Nm

34 - Lock plate

35 - Drive shaft

q Removing and installing → [Chapter](#)

36 - Hexagon bolt

q Always renew if removed

37 - Self-locking nut

q 50 Nm + 90°

q Always renew if removed

38 - Flange nut

q 50 Nm

q Always renew if removed